

# **Bluffers Basin Challenge Series**

## **Racing Handbook and Sailing Instructions**

**2023-04-23**

**BLUFFERS PARK YACHT CLUB**

Club House Telephone  
(416) 261-6993

**CATHEDRAL BLUFFS YACHT CLUB**

Club House Telephone  
(416) 261-7627

**HIGHLAND YACHT CLUB**

Club House Telephone  
(416) 267-0224

# CONTENTS

GENERAL CONDITIONS .....	4
Owner's Responsibility .....	4
Entry, Registration and Eligibility .....	4
GENERAL SAILING INSTRUCTIONS .....	4
Rules and Regulations .....	4
Amendments to RRS .....	4
Acknowledgement of Intent to Start .....	4
Organizing Authority .....	4
Changes in Sailing Instructions .....	4
Boat Identification .....	5
Safety and Rescue .....	5
Retiring Boats .....	5
Radio Communications .....	5
Race Committee Boat Activities .....	5
Committee Boat Backup .....	6
Course To Be Sailed .....	6
RACE COURSE .....	7
Mark locations .....	8
Distances and Bearings .....	8
STARTING SIGNALS AND SEQUENCES .....	10
Getting Set .....	10
Starting Area .....	10
Starting Line .....	10
Finishing Line .....	11
Starts .....	11
VISUAL STARTING SIGNALS .....	11
MEANINGS OF OTHER PENNANTS .....	11
General Recall .....	11
Individual Recall .....	12
Postponement .....	12
Abandonment Signals .....	12
Shortened Course .....	12
Change Course .....	13
Course Direction .....	13
Signals Made Ashore .....	13
MOTORING .....	13
PROTESTS .....	13
REDRESS .....	14
ARBITRATION .....	14
CURFEW .....	14
LIGHT AIR CONDITIONS .....	14
WEATHER GUIDELINES – High Winds or High Waves .....	15
FLEET BREAKDOWN .....	15
SCORING SYSTEM .....	15
PROTEST FORM .....	17
RACE FLAGS .....	19

## GENERAL CONDITIONS

### Owner's Responsibility

The safety of a boat and its crew is the sole responsibility of the owner(s) and/or skipper, who will ensure that the boat is fully seaworthy and in compliance with the current Transport Canada Small Vessel Regulations and Applicable Laws. Further, it is the sole responsibility of the skipper and crew of each boat to decide whether or not to start, continue in, or retire from a race, as per RSS 4.

### Entry, Registration and Eligibility

The owner(s) of a boat intending to participate in the event(s) must complete a registration form, including the rating initialed by a PHRF-LO handicapper, and submit payment of the registration fee with a signed liability waiver, before the boat is allowed to race and/or be scored. All boats must possess a valid and current PHRF certificate to be scored. The Organizing Authority reserves the right to refuse and/or rescind entry of any boat found to be operating in an unsafe or unsportsmanlike manner.

**REGISTRATION DEADLINE - 2100h ONE WEEK PRIOR TO THE RACE.**

## GENERAL SAILING INSTRUCTIONS

The following Instructions, Rules, and Regulations shall apply to all races of Bluffers Park Yacht Club, Cathedral Bluffs Yacht Club, and Highland Yacht Club.

### Rules and Regulations

All races shall be governed by the current Racing Rules of Sailing (RRS) and amendments as modified by the prescription of Sail Canada and these sailing instructions.

### Amendments to RRS

The following is a summary of the Rules modified by these Sailing Instructions. Details can be found in the relevant sections of this document:

- RRS 29.2** Under a General Recall, the recalled classes will start according to the class pennants as signalled on the race committee boat.
- RRS A5** A boat that fails to notify the Race Committee of retirement shall be scored DNE (Disqualified, Not Excludable)
- RRS A5.3** Boats that do not finish (DNF) shall be scored as 'the number of boats which started the race + 1'.

### Acknowledgement of Intent to Start

All boats intending to race shall, before their preparatory signal, report to the Race Committee and receive acknowledgement of their presence.

*The Race Committee WILL NOT accept reports of intent to start via VHF, nor will late boats be recognized as starting if they are more than 10 minutes later than the proper start of their division.*

*Boats failing to report may be scored as, Did Not Start (DNS).*

### Organizing Authority

The racing committees of Bluffers Park Yacht Club, Cathedral Bluffs Yacht Club, and Highland Yacht Club, henceforth called the *Bluffers Basin Race Management Committee*, is the organizing authority for all races.

### Changes in Sailing Instructions

Additions, changes, and exceptions to these Sailing Instructions may be made in writing (i.e. as a *Notice to Racers*) at any time throughout the season, provided that these Notices are posted on the Racing Notice Boards in Bluffers Park Yacht Club, Cathedral Bluffs Yacht Club, and Highland Yacht Club a minimum of 24 hours before they take effect.

*Failure to notify individual entrants shall not be grounds for redress.*

## **Boat Identification**

It is the responsibility of individual boats to ensure that their correct finishing time is recorded. It is recommended that boats note their own finishing time, and also make note of the boats which finish immediately before and after them, so that the finishing sequence can be reconstructed if necessary. Alternate sail numbers must be reported to the Race Committee prior to the starting sequence, failure to do so may result the boat not being scored.

## **Safety and Rescue**

Each boat shall carry the necessary emergency equipment as prescribed by the Department of Transport. Boats must provide aid to any vessel in distress as per RRS1.1 and RRS1.2.

## **Retiring Boats**

Once a boat has fulfilled her check-in requirements, if she withdraws from a race or if she no longer intends to participate in racing, she shall: a) keep clear of other competitors, and b) notify the Race Committee and receive their acknowledgment either orally or on VHF radio. A boat that breaches this instruction shall be scored DNE (Disqualified, Not Excludable).RRS A5. This scoring may not be protested.

## **Radio Communications**

The Race Committee will monitor, make any announcements and communicate with boat(s) in the race over VHF Channel 71.

It is a requirement that all boats racing have a VHF radio on board, capable of receiving and transmitting on VHF Channel 71.

In an attempt to reduce traffic around the race committee boat in the pre-start, it is the intent of the Race Committee to radio broadcast the course to be sailed for the upcoming race. This announcement shall be made seconds prior the lowering of the "R" Flag (on station flag). A second courtesy broadcast shall consist of a 10 second countdown for the raising of the Numeral 1 pennant. It remains each competitor's responsibility to check-in with the Race Committee, confirm the course posted, and in accordance with RRS 26, visual starting signals shall govern, and the failure of related sound signals and broadcasts shall be disregarded.

The RC will make best efforts to communicate course changes to the fleet on VHF radio.

## **Race Committee Boat Activities**

- The Race Committee Boat will fly the RC pennant.
- The race committee boat will leave the dock and proceed towards the race course after sounding one long blast on the air horn.
- The race committee boat will proceed to an appropriate location near the race course (typically Mark 0) and stop to take a wind direction reading. The Race Committee is encouraged to contact up to 3 boats (one from each club) to solicit information pertaining to conditions on the race course (e.g. wind speed, wind direction, etc.) The course to be sailed will be decided by the Race Officer and the race committee boat will proceed to the appropriate buoy and post the race course.

- Race Committee broadcasts regarding its intentions, the course to be sailed; start times, course changes, etc. are a courtesy only. Failure of the Race Committee to make a broadcast, the time of a broadcast, or the failure of a boat to hear a broadcast shall not be grounds for redress. **Note:** All boats are asked to keep clear of the race committee boat until she finishes anchoring and posts the “on station” flag (code flag R).

### **Committee Boat Backup**

After registration is complete, the Organizing Authority will post a list pairing each scheduled weeknight race with one or more registered boats. Each race, it will be the responsibility of the assigned boat(s) to act as backup to the race committee boat or provide crew to the Race Committee if necessary. The onus is on the assigned boat(s) to check with the Race Committee to determine whether assistance is required on the day of the race by the time specified on the list. If a boat is unable to attend the race to which it has been assigned, it is responsible for arranging to change places with another boat on the list. The substitution boat must ensure the Race Committee is informed.

If the assigned boat fails to honour the requirements of this section, it shall be penalized by having its best finish in the series scored as disqualified. This scoring may not be protested.

A boat that is called upon to act as the backup race committee boat or provide crew to the Race Committee and as a result does not compete in the race, shall be listed as “OOD” and receive a score for that race as her average score in all non-discarded races in the series.

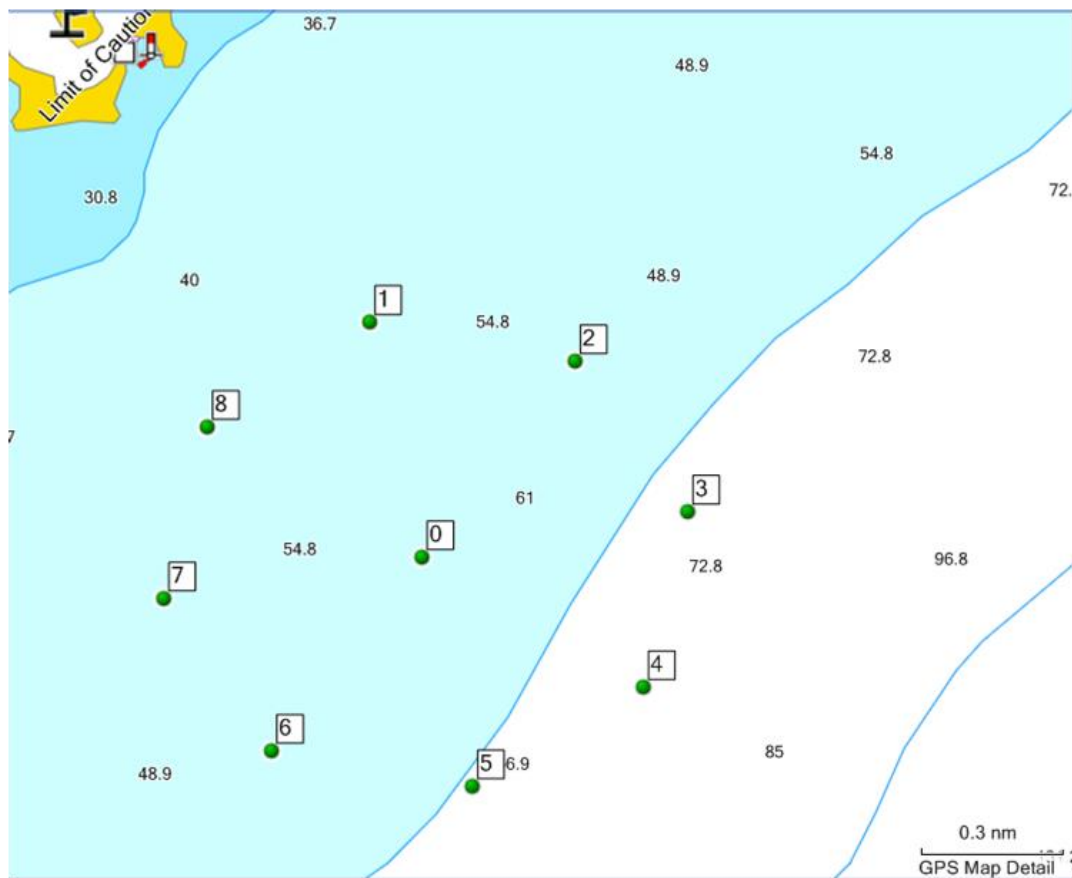
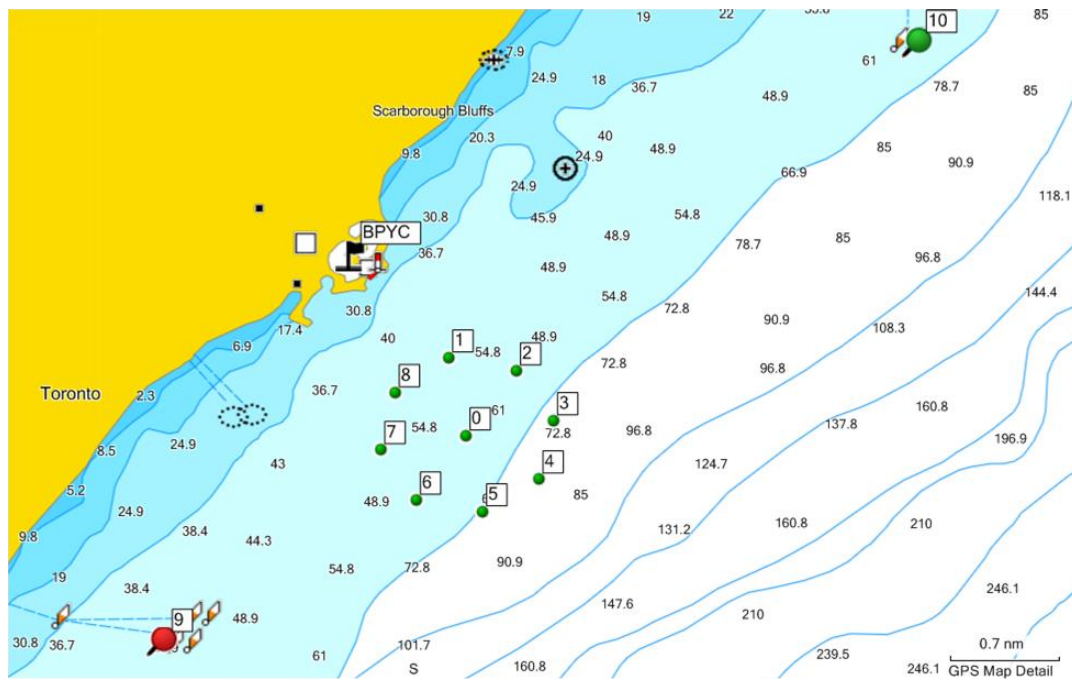
### **Course To Be Sailed**

The course to be sailed will be prominently posted on the race committee boat, using the identification numbers of the buoys as noted on the race course map contained herein.

The Race Committee will post two courses, one for Flying sails (Spinnaker “F”), and one for White sail (Non-flying “W”). The course to be sailed for Flying divisions will be identified with the letter “F” preceding the posted course. The White Sail division course will be identified with the letter “W” preceding the posted course.

In light wind conditions all boats are to be aware that the Race Committee may change or shorten the course by displaying the appropriate signal flag and sounds. Failure of the Race Committee to make a broadcast or the failure of a boat to hear a broadcast shall not be grounds for redress.

## RACE COURSE



## Mark locations

Mark	Degrees Minutes		Degrees Minutes Seconds		Decimal Degrees		Comment
	North	West	North	West	North	West	
<b>Basin Lighthouse</b>	43°42.442'	079°13.570'	43°42'26.52"	079°12'12.60"	43.707367°	079.226167°	607, White Tower Red Band, Flashing Red
<b>0</b>	43°41.377'	079°12.870'	43°41'22.63"	079°12'52.21"	43.689617°	079.214500°	
<b>1</b>	43°41.873'	079°13.004'	43°41'52.38"	079°13'00.23"	43.697883°	079.216733°	
<b>2</b>	43°41.791'	079°12.478'	43°41'47.43"	079°12'28.66"	43.696517°	079.207967°	
<b>3</b>	43°41.473'	079°12.189'	43°41'28.39"	079°12'11.35"	43.691217°	079.203150°	
<b>4</b>	43°41.103'	079°12.303'	43°41'06.19"	079°12'18.17"	43.685053°	079.205050°	
<b>5</b>	43°40.894'	079°12.741'	43°40'53.64"	079°12'44.46"	43.681567°	079.212350°	
<b>6</b>	43°40.969'	079°13.255'	43°40'58.13"	079°13'15.33"	43.682817°	079.220917°	
<b>7</b>	43°41.290'	079°13.532'	43°41'17.40"	079°13'31.92"	43.688167°	079.225533°	
<b>8</b>	43°41.652'	079°13.420'	43°41'39.10"	079°13'25.20"	43.694200°	079.223667°	

## Distances and Bearings

MARK TO>	0		1		2		3		4		5		6		7		8	
	Brg	dist (Nm)	Brg	dist (Nm)	Brg	dist (Nm)	Brg	dist (Nm)	Brg	dist (Nm)	Brg	dist (Nm)	Brg	dist (Nm)	Brg	dist (Nm)	Brg	dist (Nm)
<b>0</b>			0.0	0.5	45.0	0.5	90.0	0.5	135.0	0.5	180.0	0.5	225.0	0.5	270.0	0.5	315.0	0.5
<b>1</b>	180.0	0.5			112.5	0.4	135.0	0.7	157.5	0.9	180.0	1.0	202.5	0.9	225.0	0.7	247.5	0.4
<b>2</b>	225.0	0.5	292.5	0.4			157.5	0.4	180.0	0.7	202.5	0.9	225.0	1.0	247.5	0.9	270.0	0.7
<b>3</b>	270.0	0.5	315.0	0.7	337.5	0.4			202.5	0.4	225.0	0.7	247.5	0.9	270.0	1.0	292.5	0.9
<b>4</b>	315.0	0.5	337.5	0.9	0.0	0.7	22.5	0.4			247.5	0.4	270.0	0.7	292.5	0.9	315.0	1.0
<b>5</b>	0.0	0.5	0.0	1.0	22.5	0.9	45.0	0.7	67.5	0.4			292.5	0.4	315.0	0.7	337.5	0.9
<b>6</b>	45.0	0.5	22.5	0.9	45.0	1.0	67.5	0.9	90.0	0.7	112.5	0.4			337.5	0.4	0.0	0.7
<b>7</b>	90.0	0.5	45.0	0.7	67.5	0.9	90.0	1.0	112.5	0.9	135.0	0.7	157.5	0.4			22.5	0.4
<b>8</b>	135.0	0.5	67.5	0.4	90.0	0.7	112.5	0.9	135.0	1.0	157.5	0.9	180.0	0.7	202.5	0.4		

The following are example courses that may be sailed for given wind directions. This is provided as guidance for the Race Committee only. The actual course to be sailed will be designated as per the 'Course To Be Sailed' section.

Wind	Flying		White Sail (Sausage)		White Sail (Olympic)	
	Course	Distance	Course	Distance	Course	Distance
349 – 011	1515150	6.0 nm	15150	4.0 nm	175150	4.4 nm
011 – 034	21616160	5.9 nm	216160	4.1 nm		
034 – 056	2626260	6.0 nm	26260	4.0 nm	286260	4.4 nm
056 – 079	32727270	5.9 nm	327270	4.1 nm		
079 – 101	3737370	6.0 nm	37370	4.0 nm	317370	4.4 nm
101 – 124	43838380	5.9 nm	438380	4.1 nm		
124 – 146	4848480	6.0 nm	48480	4.0 nm	428480	4.4 nm
146 – 169	54141410	5.9 nm	541410	4.1 nm		
169 – 191	5151510	6.0 nm	51510	4.0 nm	531510	4.4 nm
191 – 214	65252520	5.9 nm	652520	4.1 nm		
214 – 236	6262620	6.0 nm	62620	4.0 nm	642620	4.4 nm
236 – 259	76363630	5.9 nm	763630	4.1 nm		
259 – 281	7373730	6.0 nm	73730	4.0 nm	753730	4.4 nm
281 – 304	87474740	5.9 nm	874740	4.1 nm		
304 – 326	8484840	6.0 nm	84840	4.0 nm	864840	4.4 nm
326 – 349	18585850	5.9 nm	185850	4.1 nm		

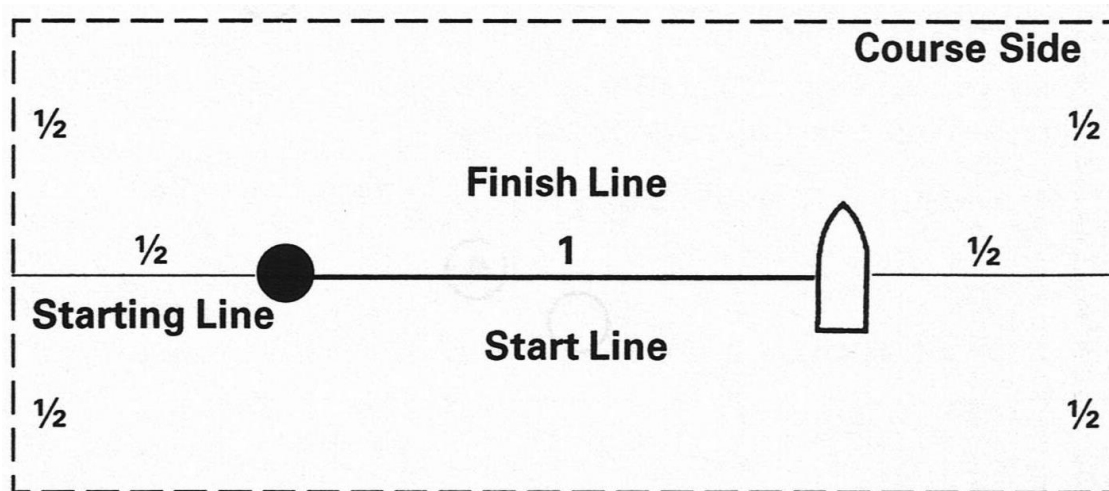
## STARTING SIGNALS AND SEQUENCES

### Getting Set

The Race Committee will endeavour to take down the "R" pennant approximately one minute prior to the raising of the warning signal. (See illustration on page 19)

### Starting Area

All boats in a start other than the ones for which the preparatory signal has been made must keep clear of the starting area and avoid interference with any starting boat. Non-starting boats must remain a distance equal to at least  $\frac{1}{2}$  the length of the start line away from (and behind, for boats not yet started) the start line and its extensions. The starting area is an exclusion area for the duration of the starts and boats that have started and are sailing on their downwind leg must also stay clear of the start area. Failure to do so may result in protest and possible disqualification. Only boats preparing to start may enter this start area.



### Starting Line

The Start Line will be between the signal flag halyard or pole flying the Class or Individual Recall flag on the race committee boat and a mark.

The default start mark for all races will be Mark zero (0). If, however, starting a race at mark zero (0) will not allow for an upwind start, the race committee may, at its discretion, move the start to a mark that will allow for an upwind start.

The Race Committee may set a floating mark as a start mark. This mark will be designated as mark "X".

The Race Committee may deploy a mark (or marks) designated as 'distance marks' off the stern and/or bow of the race committee boat. Such marks are considered to be extensions of the race committee boat for the purposes of scoring and penalties. Boats shall not pass between the distance mark(s) and the race committee boat.

## Finishing Line

The Finishing Line will be between the signal flag halyard or pole flying a Blue Flag (*See illustration on page 19*) on the race committee boat and a mark.

- Denotes the finish of the race.

There will be one sound signal as each boat crosses the line and finishing times are recorded.

## Starts

The number of starts in each series will be posted as a Notice to Racers by the Bluffers Basin Race Management Committee. Your start will be determined according to your assigned Division. Each start will comprise a 5-minute sequence with a 1-minute gap between sequences as follows:

Time (min)	Pennant	Sound	Action
0	Numeral pennant(s) raised for Divisions in this start	1 Blast	Warning signal - 1 <sup>st</sup> start
1	"P" pennant raised	1 Blast	Preparatory signal - 1 <sup>st</sup> start
4	"P" pennant lowered	1 Long Blast	One minute to start
5	Numeral pennant(s) lowered for Divisions in this start	1 Blast	Starting signal – 1 <sup>st</sup> start
<1 minute gap>			
6	Numeral pennant(s) raised for Divisions in this start	1 Blast	Warning signal - 2 <sup>nd</sup> start
7	"P" pennant raised	1 Blast	Preparatory signal - 2 <sup>nd</sup> start
10	"P" pennant lowered	1 Long Blast	One minute to start
11	Numeral pennant(s) lowered for Divisions in this start	1 Blast	Starting signal - 2 <sup>nd</sup> start
<1 minute gap>			
12	Numeral pennant(s) raised for Divisions in this start	1 Blast	Warning signal – 3 <sup>rd</sup> start
	... and so on		

## VISUAL STARTING SIGNALS

In accordance with RRS 26, visual starting signals shall govern and the failure of related sound signals shall be disregarded.

## MEANINGS OF OTHER PENNANTS

### General Recall

- 1<sup>st</sup> Substitute means General Recall. (*See illustration on page 19*)
- 2 Sound Signals
- The Race Committee may announce a general recall over the VHF

When at the starting signal the Race Committee is unable to identify boats that are on the course side of the starting line, or there has been an error in the starting procedure, the Race Committee may signal a general recall. The warning signal for a new start for the recalled class shall be made following the last class start. Recalled classes will start according to the class pennants as signalled on the race committee boat.

This modifies RRS 29.2

## Individual Recall

- Code X means Individual Recall. (*See illustration on page 19*)
- 1 sound signal
- It is the intent of the Race Committee to announce over VHF the sail number or boat name of each premature starter.

A boat over the line at the time of the hoisting of the start flag must restart to qualify as a starting boat. (No change to RRS 29.1)

Failure to hear the hail will not be grounds for redress.

## Postponement

- Answering Pennant means Postponement. (*See illustration on page 19*)
- 2 sound signals

The race is postponed temporarily, for any reason, for example a difficulty in anchoring the race committee boat, or a wind shift that necessitates a change in course. (No change to RRS 27.3)

## Abandonment Signals

After the starting signal, the Race Officer may *abandon* the race (display flag N, N over H, or N over A, with three sounds), as appropriate. (no change to RSS 32.1),

**Code N** - All races that have started are *abandoned*. Return to the starting area. The warning signal will be made 1 minute after removal unless at that time the race is *abandoned* again or *postponed*.

**Code N over H** - All races are *abandoned*. Further signals ashore.

**Code N over A** - All races are *abandoned*. No more racing today.

In the event of inclement weather, the Race Committee will convene prior to leaving the dock and decide if the race is to be abandoned.

## Shortened Course

- Code S means Shorten Course, and will be displayed on the race committee boat. (*See illustration on page 19*)
- 2 sound signals

The course may be shortened at the discretion of the Race Officer (no change to RRS 32.2) – for example, if the winds are light.

The Race Officer may shorten the course for one or more start divisions or the entire fleet:

- If one or more divisional start flags are displayed along with the shorten course pennant, the shorten course signal applies to those starts only.
- If no divisional start flags are displayed along with the shortened course pennant, the shorten course signal applies to all divisional starts.

The shortened course shall be signalled before the first boat crosses the new finishing line.

If the race committee signals a shortened course, the finishing line shall be at a rounding mark or Mark 0, between the mark and a staff displaying “S” flag. Boats must finish by crossing the line in the direction of the course from the last mark. This changes Rule 32.2.

## Change Course

- Code C means Change Course. *(See illustration on page 19)*
- Repeated sound signals

A change of course will be signalled when boats are near the mark that begins the leg changed. The Race Committee will display Code Flag C and the new mark(s) to be rounded, while making repeated sound signals, signalling all boats before they begin the leg.

## Course Direction

The marks shall be rounded to port unless the Race Committee flies a green flag, in which case the marks shall be rounded to starboard.

## Signals Made Ashore

Race Committee Departure -The Race Committee shall make one courtesy sound signal as the race committee boat departs the harbour on the way to the race course.

Signals made ashore will be displayed on the race committee boat at its mooring with a courtesy announcement on VHF radio.

Code Flag "AP" (Answering Pennant) - Code flag "AP" with two sound signals means "The race is postponed. The Warning Signal will be made not less than 30 minutes after the "AP" is lowered." A courtesy announcement will be made on VHF radio.

## MOTORING

A boat's motor must be shut off prior to the preparatory (4 minute) signal for the class in which it is competing. Boats failing to obey this rule will be disqualified. Boats may use their motors to return to start area, if under a general recall, up to the time of the new preparatory signal. (no change to RRS 42.1)

## PROTESTS

RRS rules and these Sailing Instructions will be used for settling protests.

The Organizing Authority will post a list of persons to whom protests can be submitted on the Racing Notice Boards in Bluffers Park Yacht Club, Cathedral Bluffs Yacht Club, and Highland Yacht Club.

Protesting skippers are reminded that they must:

- Immediately display a red protest flag.
- Immediately advise the protested boat(s) of the infraction.
- Notify the Race Committee of the protest and the boat being protested.
- Submit the completed Protest form no later than 30 minutes after the return of the race committee to the dock in order for the protest to be valid.
- Address all remarks to the Protest Committee only, and in private.
- Refrain from argument with the Protest Committee members over their decision.

The Race Officer will determine the fleet and club of the parties to the protest and select racers from a list to form a protest committee as follows:

1. The protest committee shall consist of one member of each of the three clubs (HYC, CBYC and BPYC).
2. The individuals selected will be from division(s) other than those of the parties to the protest.
3. A protest committee chairperson will be appointed from a club not a party to the protest, if possible.
4. The protestor will be provided with a copy of the list, and assisted to contact the protest committee chair.

The protest committee may decide to hear the protest at that time, or defer the hearing to a later date that is agreed upon by all parties. Race results may be posted before protests are resolved with suitable notification of "Protest Pending". Race results will be amended and reposted once protests have been resolved.

## REDRESS

Requests for Redress shall be filed, using a time-stamped Protest Form, no later than 48 hours after the results for the race have been made available.

## ARBITRATION

All protests shall be subject to Arbitration in accordance with RRS Appendix T.

## CURFEW

For weeknight races, in order to avoid racing after dark, there will be a curfew as follows:

Month	Curfew
May 10	20:30
May 17	20:35
May 24	20:45
May 31	20:50
June 7	20:55
June 14	21:00
June 21	21:00
June 28	21:00
July 5	21:00
July 12	20:55
July 19	20:50
July 26	20:45
Aug 2	20:35
August 9	20:25
August 16	20:10
August 23	20:00

For weekend races (Fall Series), there will be a curfew of 2h30m after the first start for each race. These curfews will apply unless otherwise stated in the Notice to Racers. Curfews are absolute and not elastic.

## WEATHER GUIDELINES

This section is intended as a guideline for conducting races. It is not intended to limit the discretionary power of the Race Committee, nor is it intended to serve as a basis for redress if the Race Committee chooses not to follow these guidelines. Rather, this is intended to aid the Race Committee in satisfying the contradictory objectives of minimizing the number of DNFs while maximizing the length of the races within the limits of the curfew, safety and to give the racers an idea of what to expect. Although these guidelines are written for a weeknight buoy race, the principles can be extended to other races.

Generally, races should not start, or races in progress should be abandoned when:

1. wind gusts exceed 25 knots for more than 30 seconds.
2. wind gusts exceed 30 knots for any duration.
3. the Race Committee considers conditions are unsafe for sailing.

4. the Race Committee cannot see: the harbour entrance, all competitors or visibility is under 1.0NM for more than 5 minutes.

## Light Air Conditions

The minimum wind speed for starting shall be that in which the Race Committee observes that the average NFS boat has sufficient capability for safely executing pre-start maneuvers.

1. A minimum of four (4) legs should be posted even if the wind is light.
2. If the wind dies after the start sequence has begun but before the first NFS division has started, the race shall be postponed.
3. The start can be delayed by up to 45 minutes, after which time the race should be abandoned if the boats cannot make way under sail (not moved by currents).
4. If the lead boat for a fleet does not reach the first mark in 25 minutes, consideration should be given to abandoning the race for that fleet.
5. The Race Committee should start a stopwatch any time the wind goes under 4 knots and stop it when the wind goes back over 4 knots, if the time measured ever exceeds 5 minutes the Race Committee should consider abandoning the race.

## Forecast High Winds and/or Waves

The Topping Rule of 23 will be observed. If the forecast wind speed (in knots) and the forecast significant wave height (in feet) is more than 23 racing will likely be cancelled by the race committee.

Wind Speed + Wave Height < 23 for racing to occur.

## Visibility

Visual meteorological conditions will be applied which require a minimum of 1.0 NM of visibility without clouds, fog or rain impeding mark identification on the racecourse. If the 0 (zero) mark cannot be clearly identified from the basin entrance racing will likely be cancelled by the race committee.

## FLEET BREAKDOWN

The fleet will be split into classes based upon PHRF rating, boat size, boat type, and/or sail configuration. Each class will be assigned to a divisional start. The classes and divisional start assignments will be determined after registration and posted as a Notice to Racers by the host club(s). All late registering boats will be added to individual classes according to the above criteria.

## SCORING SYSTEM

The Basin races will be divided into a Spring, Summer and Fall series. The race dates and series split will be posted as a Notice to Racers prior to the commencement of the series. For each series, flags will be awarded to the top three finishers in each class.

A PHRF-LO Time-On-Time low point scoring system will be used. Each boat finishing in a race (and not thereafter retiring or being disqualified) will be scored points equal to her finishing place as follows:

### Finishing Place Points

1 <sup>st</sup> -----	1.00
2 <sup>nd</sup> -----	2.00
3 <sup>rd</sup> -----	3.00
4 <sup>th</sup> -----	4.00
etc. -----	etc.

RRS scoring rule A5.3, is in affect. This rule defines the scoring for boats that do not come to the starting line (DNC), do not start (DNS), or are disqualified (DSQ) and boats that do not finish (DNF). Boats that do not finish (DNF) shall be scored as 'the number of boats which started the race + 1'. This modifies RRS A5.3.

The finishing place for a boat in a series is determined by adding together the points awarded for the individual races in the series, excluding a certain number of throwaway races. In scoring the series, the number of races to be counted for each boat is determined by the number of races its class completed, as follows:

<b># Races Completed by the class</b>	<b># Races Counted</b>
9 or more	# of races – 3
6 – 8	5
5	4
4 or fewer	All races

When there is a tie in total points between two or more boats, the tie will be broken in favour of the boat or boats with the most first places, and when the tie remains, the most second places, and so on if necessary throughout all the races that count toward the total points. If the tie still remains, it shall be broken in favour of the boat which finished ahead in the last race in which the tied boats both competed.

# PROTEST FORM

also for requests for redress and reopening

Received by race office: Date and time .....Signature .....Number .....

Protest Time Limit .....

*Fill in and tick as appropriate*

1. EVENT ..... Organizing authority ..... Date ..... Race no. ....

## 2. TYPE OF HEARING

Protest by boat against boat Request for redress by boat or race committee

Protest by race committee against boat Consideration of redress by protest committee

Protest by protest committee against boat Request by boat or race committee to reopen hearing

Consideration of reopening by protest committee

## 3. BOAT PROTESTING, OR REQUESTING REDRESS OR REOPENING

Class ..... Fleet ..... Sail no. .... Boat's name .....

Represented by ..... Phone ..... Email .....

## 4. BOAT(S) PROTESTED OR BEING CONSIDERED FOR REDRESS

Class ..... Fleet ..... Sail no. .... Boat's name .....

## 5. INCIDENT

Where and when the incident occurred.....

Rules alleged to have been broken ..... Witnesses .....

## 6. INFORMING PROTESTEE How did you inform the protestee of your intention to protest?

By hailing When? ..... Word(s) used .....

By displaying a red flag When? .....

By informing her in some other way Give details .....

## 7. DESCRIPTION OF INCIDENT (use another sheet if necessary)

Diagram: one square = hull length; show positions of boats, wind and current directions, marks.

.....  
.....  
.....  
.....  
.....  
.....  
.....  
.....  
.....  
.....  
.....  
.....  
.....  
.....  
.....

THIS SIDE FOR PROTEST COMMITTEE USE Number .....  
Fill in and tick as appropriate Heard together with numbers .....

Withdrawal requested Signature ..... Withdrawal permitted

Class ..... Fleet ..... Race .....

Protest, or request for redress or reopening, received within time limit Time limit extended

Protestor, or party requesting redress or reopening, represented by .....

Other party, or boat being considered for redress, represented by .....

Names of witnesses .....

Interpreters .....

Remarks

Conflict of interest declared Objections: Yes No .....

Written protest or request identifies incident .....

'Protest' hailed at first reasonable opportunity .....

No hail needed; protestee informed at first reasonable opportunity .....

Red flag conspicuously displayed at first reasonable opportunity .....

Protest or request valid; hearing will continue Protest or request invalid; hearing is closed

FACTS FOUND .....

.....

.....

.....

.....

.....

.....

.....

Diagram of boat ..... is endorsed by committee Committee's diagram is attached

CONCLUSIONS AND RULES THAT APPLY .....

.....

.....

DECISION

Protest: dismissed Boat(s) ..... is (are) disqualified from race(s) .....

penalized as follows : .....

Redress: not given given as follows : .....

Request to reopen a hearing: denied granted



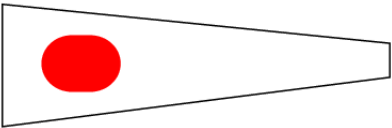
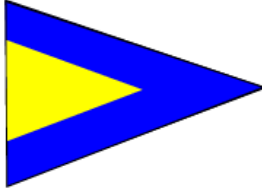
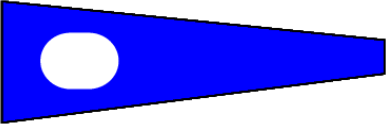

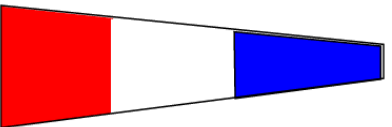
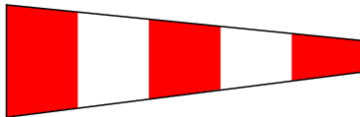
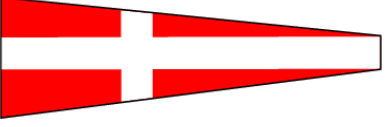

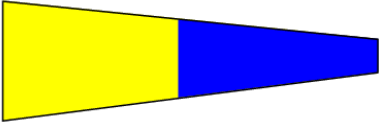




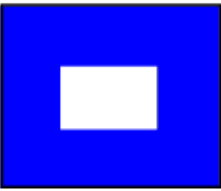
Protest committee chairman and other members .....

.....

Chairman's signature .....

Date and time .....

## RACE FLAGS

	Race Committee Committee boat No sound		Letter 'X' Individual Recall 1 Blast
	Numeral 1 1 <sup>st</sup> Start 1 Blast		1 <sup>st</sup> Substitute General Recall 2 Blasts
	Numeral 2 2 <sup>nd</sup> Start 1 Blast		Letter 'S' Course Shortened 2 Blasts
	Numeral 3 3 <sup>rd</sup> Start 1 Blast		Answering Pennant Postponement 2 Blasts
	Numeral 4 4 <sup>th</sup> Start 1 Blast		Letter 'N' Abandon Races 3 Blasts
	Numeral 5 5 <sup>th</sup> Start 1 Blast		Letter 'R' On Station No Sound
	Numeral 6 6 <sup>th</sup> Start 1 Blast		Letter 'C' Course Change Repeated sounds
	Blue Flag Finishing Line No Sound		Letter 'P' Preparatory Flag Raise - One Blast Lower – One Long Blast